



NATIONAL ASSOCIATION OF TEACHERS OF SINGING

inter nos

"Between Us"

WWW.NATS.ORG

VOLUME 39, NO.1. WINTER 2006

ASSOCIATION NOTES

MEMBERS SPEAK OUT

PAGE 2

PLANNED GIVING- THE GIFT OF A LIFETIME

PAGE 4

IN THE SPOTLIGHT: NATIONAL CONFERENCE NEWS

PAGE 18

NEW EDUCATORS CONFERENCE AND OTHER REGIONAL NOTES

PAGE 12

SANTA FE OPERA APPRENTICE REUNION

PAGE 16

Happy New Year to All!

As we enter 2006 you will notice a change in some of the programs and services you have come to expect from the National Association of Teachers of Singing, Inc.

A New *inter nos*

As you can see, the design and layout of the national newsletter have been revamped to be more visually efficient and appealing. You will notice new sections:

- * *Association Notes* – will provide news of importance to all members
- * *Foundation Notes* – will give you a regular update on the NATS Foundation
- * *Member Notes* – an opportunity to offer your opinions and comments to the entire membership
- * *International Notes* – share news of members and potential members abroad
- * *Regional Notes* – news on recent and upcoming events, the calendar, etc.

A New Website

Growing membership and an ever-expanding range of services have mandated that the website be managed by the staff in the executive office, who will be able to offer full-time care of www.nats.org. We have taken this opportunity to revamp the site, and to add some new features:

- *A New Look and New Format* – the appearance of the site has been updated, and the pages have been organized with easy-to-use hot buttons to help you navigate more easily and clearly.
- *Conference Website* – we have added an official conference website to the primary pages, eliminating time-consuming forwards and links.
- *New Methods of Payment* – You will now receive instant confirmation when paying for anything online at nats.org, via a newly acquired service: authorize.net. We have added Discover Card to our list of credit card options for your convenience, and you may now pay with the convenience of e-check.
- *Employment Opportunities* – This year we have added a new free benefit for members: an employment opportunity listing that will offer you current news about who is hiring voice teachers, and where.

The new site will be up and running early in January, but will be under revision during the ensuing several months. We apologize for any temporary difficulties you may experience, and ask for your patience as we complete the new website.

PRSRT STANDARD
U.S. POSTAGE

PAID

PERMIT #610
JACKSONVILLE, FL

inter nos

VOL. 39, No. 1

Publisher,

Kandie K. Smith

Executive Director

kandiesmith@aol.com

Managing Editor,

Deborah L. Guess

violetdlg@aol.com

inter nos is the official newsletter of the National Association of Teachers of Singing. It is published three times per year (Winter, Spring, & Fall) and mailed to all NATS members.

Please send address changes to:

NATS

4745 Sutton Park Court, Suite 201
Jacksonville, FL 32224

Phone: 1-904-992-9101

Fax: 1-904-992-9326

E-mail: info@nats.org

Visit us online at: www.nats.org

Publication Deadlines:

All material for publication must be submitted to the NATS Executive Office by:

Winter issue.....Dec. 1
Spring issueMar. 1
Fall issue..... Aug. 1

Mission: *The National Association of Teachers of Singing, Incorporated, is a nonprofit organization dedicated to encouraging the highest standards of the vocal art and of ethical principles in the teaching of singing; and to promote vocal education and research at all levels, both for the enrichment of the general public and for the professional advancement of the talented.*

The National Association of Teachers of Singing, Inc., is a member of the National Music Council.

MEMBER NOTES

It would be nice to know what types of events are being held in other regions, and which are particularly successful. Is that information available?

Russell Franks

Orlando, FL

You may find information about upcoming events in the regional calendar at the back of each inter nos, or online at www.nats.org. Each newsletter will include feature articles about regional events that have recently taken place. You may also use the interactive chat rooms in the members only section of the website at Chats at nats.org.

Ed.

Please warn members that there may be a scam being run in California, if not elsewhere. An individual called me to set up private lessons, and wanted to pay me by check, in advance, *in excess of the total amount*, asking that I then return the excess amount to him. This seems like money laundering to me, and I have declined to work with this individual.

Harriet Bennish
Long Beach, CA

Thank you for the warning.

Ed.

I found the ICVT Conference this August well organized with many interesting exhibits. The sessions were quite intense. I found myself going home with a busy brain and new ideas and concepts tumbling over each other. The master classes ranged from entertaining to highly informative, and stimulating. Such an honor to watch Rudolf Janssen and Elly Ameling work together. While the conference was educational and informative, I found I learned much from my international colleagues. My ties with the US have always been strong with close friends in over twelve states, but this year my circle grew much larger. New friends and associates from Japan to New Zealand, Sweden and Denmark. It is a wonderful situation to find yourself able to e-mail colleagues from all over the world with enquiries. We have formed our own weekly convention of ideas, sharing of concerns, and repertoire. To teach in a private studio can be insular. Through NATS, I have made lifetime connections with teachers around the world.

Adele Clark
Vancouver, B.C.

Comments? Questions? Concerns?

Send an email or letter to:

inter nos
4745 Sutton Park Court
Suite 201
Jacksonville, FL 32224
info@nats.org

NATS Executive Director Retires

William (Bill) Vessels officially retired as executive director of NATS on December 1, 2005. After fifteen years of dedicated service in the national office, he and his wife Shirley plan to travel and enjoy retired life together.

During his tenure as executive director, William Vessels provided leadership and guidance that created tremendous growth for NATS, and helped it to develop from a grassroots organization to an internationally recognized association of more than 6400 members.

His careful stewardship has placed NATS in a position of strong financial security, thus helping to ensure the continuation of the many programs and services provided for its members, and the students they teach. He has diligently sought ways to streamline the budget while increasing services to the members, and has helped guide the investment strategy of the organization to great success.

He, along with his current and dedicated staff (Deborah Guess, Office Manager; Susan Grizzard, Membership Secretary) modernized and codified the practices of the national office, and helped the directors to establish ever clearer policies and procedures to benefit the members. He transformed the function and duties of the executive office, freeing busy members from time-consuming obligations such as the creation and distribution of the national newsletter, and helped NATS, Inc. to come up to industry standards, all the while safely maintaining and growing the programs, services, and finances of the organization.



Dr. William Vessels

Dr. Vessels has provided countless benefits to the association, yet his services did not begin with his appointment as executive director in 1990. He joined the National Association of Teachers of Singing as an active member in 1964, and during the ensuing years served as leadership at the chapter, district, regional and national levels before being asked to assume the role of executive director.

William A. Vessels has given tirelessly of his time and talents to NATS during the last forty-one years, and we, the members, owe him a debt of great gratitude.



Dr. William Vessels opens gifts at his retirement party.



Dr. William Vessels reads the many tributes that were sent to him.



L to R: Deborah Guess, Dr. William Vessels, and Susan Grizzard

FOUNDATION NOTES

The Gift of a Lifetime

For many donors, making a gift through a will (a bequest) is the most realistic way to provide a substantial contribution to the NATS Foundation. Property, including cash, securities, jewelry, works of art and real estate may be given to the Foundation through your will, the legal document that allows you to decide to whom your assets are to be distributed and in what amounts or proportions. Your bequest offers future support without affecting your current assets or income.

Every year over half (50%) of Americans who pass away do so without leaving behind a will. This means that their estates are distributed by the states in which they domiciled, regardless of any personal wishes or affiliations they may have had. Naming the NATS Foundation as a beneficiary in your will protects both you and the organization, and helps ensure the continued life and activity of the Foundation into perpetuity.

If you already have a will, consider adding a codicil (amendment to the will) naming the Foundation as a beneficiary. This smaller document should confirm the validity of your current will, and include new provisions. Signed, witnessed, dated, and attached to the original will, the codicil is preferred as a method for making bequests by many donors because it is less expensive and time consuming than drafting a new will.



**Louise Lerch NATS
Foundation
President**

You may choose to leave a specific amount, a fraction of your estate, or a percentage of your estate, whatever suits your needs best. Fractions and percentages allow you to make provisions for a variety of relatives and organizations without the need of annual revision as your assets change, saving you expense.

The work of the NATS Foundation is entirely supported by charitable gifts. If you would like to make a lifetime gift to support this work, please fill out the NATS Foundation Planned Giving Society Membership Application, and return it to:

**NATS, Inc.
4745 Sutton Park Court
Jacksonville, FL 32224
T: 904-992-9101
F: 904-992-9326**

NATS Foundation Tour Vienna, Salzburg and Prague for the Music Connoisseur June 7-17, 2006

*Celebrating Mozart's 250th Birthday with concerts
exhibitions, events and specialized tours.*

Wednesday, June 7

Depart to Austria

Thursday, June 8

Arrive Salzburg. Afternoon walking tour and Welcome Dinner in the evening.

Friday, June 9

Tour of Salzburg focusing on Mozart and "The Sound of Music." Afternoon free.

Saturday, June 10

Motor coach drive through the Salzkammergut, the lake region, lunch in St. Wolfgang. In the afternoon travel to Bad Ischerl to see the Kaiservilla. Mozart Dinner concert in the evening in Salzburg.

Sunday, June 11

Travel to Vienna with a stop at Melk in the Wachau Valley. Afternoon visit to Duernstein. Late afternoon arrival in Vienna, evening free.

Monday, June 12

Walking tour of Vienna, focusing on Mozart, Haydn, Bach, Strauss and Schubert. Afternoon free. Evening dinner and concert at the Kursalon.

Tuesday, June 13

Vienna, tour the Schönbrunn Palace. In the evening take the Heurigen Express to the old wine-growing town of Grinzig, followed by a traditional Heurigen dinner.

Wednesday, June 14

Train travel to Prague.

Thursday, June 15

Morning city tour of Prague. Afternoon excursion to Nelahozeves Castle. Evening free.

Friday, June 16

Walking tour of Prague. Afternoon free. Farewell Danube Dinner Cruise in the evening.

Saturday, June 17

Depart Prague for the United States.

**Double Occupancy USD \$2,473
(inclusive)**

**Single Occupancy USD \$2,898
(inclusive)**

**Watch for registration information
coming soon!**

*Prices subject to change due to fluctuation of
currency exchange*

NATS Foundation
Planned Giving
Society
Membership Application

Name _____

Address _____

City _____ **State** _____ **Zip** _____ **Country** _____

Phone (____) _____ **E-mail** _____

Type of Provision

I have made a provision for the NATS Foundation in my estate plan as follows:

1. Outright bequest in will:

- a. Specific dollar amount \$ _____
- b. Share of entire estate (____%) \$ _____

2. Conditional bequest or will

\$ _____

(Please describe the conditions on a separate sheet and attach)

3. As beneficiary of life insurance policy

\$ _____

If your gift to the NATS Foundation is for other than the Foundation's general purposes, please describe any restrictions on an attachment. Attachments or letters that further describe the above provision(s) are encouraged. In particular, a copy of the section of your will, trust agreement, or other document containing the provision(s) will be appreciated. In the event of unforeseen circumstances that require any further change in the above estate planning provision(s), I agree to notify the NATS Foundation of such change.

SIGNATURE

DATE

Please return this form to:

NATS Inc., 4745 Sutton Park Court, Suite 201, Jacksonville, FL 32224
904-992-9101 (phone), 904-992-9326 (fax), info@nats.org

ANNOUNCING THE 2006 NATS INTERN PROGRAM

June 13-23, 2006

University of Missouri-Kansas City Conservatory of Music

Roy Delp, Director of the NATS Intern Program

Rebecca Sherburn, On-site Coordinator

Master Teachers:

Lorraine Manz (Oberlin Conservatory of Music)

James McDonald (New England Conservatory of Music)

Stephanie Samaras (New York City Private Studio)

Donald Simonson (Iowa State University Department of Music)

The NATS Intern Program is an exciting and innovative venture that seeks to pair experienced and recognized master teachers of voice with talented young members of NATS. Within a format designed to promote the dynamic exchange of ideas and techniques, the goal is to improve substantially the studio teaching skills of these promising young teachers. Each intern will teach four lessons to two students (one male and one female) and perform in a master class under the supervision of a master teacher. In addition, the master teachers, our vocal literature liaison, Cynthia Vaughn, and special guests will present special lectures and demonstrations. Interns chosen will be responsible for their own expenses, although financial assistance will be available through the NATS Foundation for housing and meals. Interns may also request financial assistance from their NATS chapters or regions as well as from their institutions of employment for travel. The interns' tuition expenses for this program are completely covered by NATS, Inc., and the NATS Foundation. Again this year, one of the master teachers will specialize in the needs of the private studio teacher including teaching non-classical styles, and three interns who specialize in private studio teaching will be selected to work with that master teacher.

Twelve NATS teachers will be chosen to participate
in the 2006 NATS Intern Program.

Requirements are as follows:

- An applicant must be a member of NATS in good standing with no more than five years of full-time teaching or the part-time equivalent. Working as a graduate teaching assistant does not count towards the five-year limit. Holding a Master's Degree or higher is preferable but not required.
- The application must include the completed application form (available in a downloadable version at www.nats.org, in the Fall 2005 *Inter Nos*, or by mail from NATS, Inc., 4745 Sutton Park Court, Suite # 201, Jacksonville, FL 32224), a résumé, two references, and a recent audio recording, a 15-minute audio CD of your singing with piano accompaniment in three languages, including English. Private studio teachers should include at least one non-classical song. If you cannot send a CD, a cassette-taped recording is acceptable. Applicants must not send video recordings.
- All applications must be sent by February 1, 2006 (postmark deadline).

NATS Intern Program Application 2006

Name _____ Voice Category _____

Address _____ Comfortable Singing Range _____

_____ NATS member since _____

Home Phone _____ Work Phone _____

Cell Phone: _____ E-mail: _____

Age (select one) ☐ 25-29 ☐ 30-34 ☐ 35-39 ☐ 40-44 ☐ 45+

Degrees received or in progress; name of institution, place, and dates:

One-to-one voice teaching experience (in schools or your private studio):

(Note: 20 clock hours or more per week is considered full-time)

<u>Dates</u>	<u>Places</u>	<u>Number of clock hours per week</u>
--------------	---------------	---------------------------------------

_____	_____	_____
_____	_____	_____
_____	_____	_____
_____	_____	_____
_____	_____	_____

Send the following materials by February 1, 2006 (postmark deadline) to: **Dr. Kandie Smith, NATS, Inc., 4745 Sutton Park Court, Suite 201, Jacksonville, FL 32224**

1. This completed application form (see the official announcement in ***Inter Nos*** or at www.nats.org for the complete application requirements)
2. A written statement of your reasons for applying to participate in this program
3. Your résumé
4. Two letters of recommendation (one from your immediate supervisor if applicable)
5. A 15-minute audio CD of your singing with piano accompaniment in three languages, including English. If you cannot send a CD, a cassette-taped recording is acceptable. Video recordings are not acceptable.



INTERNATIONAL NOTES

Marvin Keenze, International Coordinator

The 6th International Congress of Voice Teachers Conference

All of the requirements for a successful ICVT conference came together in Vancouver in August. There was a spectacular location, a strong and varied program, an eager and welcoming local committee and a large attendance. It was indeed a marvelous celebration for teachers and singers who came from around the world to share in the 6th conference of the International Congress of Voice Teachers.

The spirit and intent of the ICVT was evident throughout the five days. The opening ceremony featured national flags and anthems, a video presentation of scenic and traditional sights in each of the member countries and Canadian choral and solo music. This provided an inspiring beginning to the conference that was the result of four years of meticulous planning by the members of the Victoria and Vancouver Chapters, International Conference Services and the NATS national office.

This dedicated work insured that the days would proceed smoothly with efficiency and thoughtful care. We could not have asked for more. The ICVT Council voted to accept the offer of the L'Association Française des Professeurs de Chant to host the 2009 meeting in Paris. As ICVT chairman, I was delighted to welcome Slovenia, Hungary, Iceland, Denmark and Poland as the newest members of the ICVT.

FELAG ISLENSKRA SÖNGKENNARA (FIS)

In October I was in Reykjavik for the first meeting of the newest ICVT member association, THE ICELANDIC ASSOCIATION OF TEACHERS OF SINGING. Sixty-four enthusiastic teachers met at the Reykjavik Academy of Singing and Art for two days of celebration, meetings and a workshop. It was a moving experience to witness the birth of an association and to share the excitement of the charter members. Iceland has a vibrant cultural life with many music schools and a long tradition of fine teaching and singing. For information about FIS you may write to the President Signy Saemundsdottir, Signysaem@hotmail.com.

A part of my International Coordinator job description is to encourage the formation of national associations. In January I will be in Manila to meet with a number of teachers who are seeking to form an association in the Philippines. I will report on this visit in my next article.

National President of the Australian National Association of Teachers of Singing (ANATS), baritone Robert Mitchell,

graduated in 2003 with a PhD in music (Sydney), having previously gained a Master of Creative Arts (Wollongong) and Diploma of Music Education. He also holds the LTCL and AMusA in singing performance.



Robert has sung both as chorister and soloist with Opera Australia (OA) since the opening of the Sydney Opera House in 1973 and his OA roles include Antonio/Annibale: *The Gondoliers*, Spalanzani: *Les contes d'Hoffmann*, Liberto: *L'incoronazione di Poppea*, Diener: *Lulu*, Government Whip: *The Eighth Wonder*, Frère Jean: *Roméo et Juliette*, Lillas Pastia: *Carmen* and others in more than a dozen operas. He has also been a soloist in concert the Australian Elizabethan Theatre Trust, Festival of Sydney, Sydney Gay and Lesbian Mardi Gras Festival, Australian Brandenburg Orchestra, Chamber Soloists of Sydney, the New Trocadero Dance Orchestra and has broadcast for ABC Classic FM.

While continuing in his full time OA position, Robert also maintains a lively private teaching practice, is currently a lecturer in the Vocal Studies program and tutor in Music Foundation Studies at Macquarie University, having previously taught singing at the University of Western Sydney.

NOTICE

The 10th Congress of the European Voice Teachers Association (EVTA) will meet in Vienna from August 10-13, 2006 at the Universität für Musik und Darstellende Kunst Wien.

For information see

www.evta-online.org/eurovox2006

For other international events see www.nats.org

FIELD NOTES

From recent reports, it appears that student chapters of the National Association of Teachers of Singing (SNATS) have had an exciting fall semester. Two of the newest chapters are the University of Michigan and the University of Minnesota. It is very exciting to see considerable growth in the number of chapters and that older chapters are still going strong with their activities! Bravo! These facts should encourage the NATS Board of Directors that the Board is moving in the right direction with SNATS Chapters, involving our voice students more and more in the activities of the parent organization. I want to encourage NATS chapters and districts to involve the student chapters in their state and regional activities, assisting the students as much as possible by offering invitations to regular NATS activities, gifting SNATS chapters with the Journal of Singing, and helping students to attend national conferences and workshops. There will be SNATS activities at the next NATS Conference in Minneapolis, Minnesota, so let's have some SNATS people there!

If you need more information about starting a Student NATS (SNATS) chapter on your campus, please check out the NATS web site at www.nats.org, or please contact me about any of these programs. It is a pleasure to serve as your Vice-President for Discretionary Funds and Field Activities.

Dr. Kathryn Proctor Duax, Vice-President of Discretionary Funds and Field Activities, National Association of Teachers of Singing, E-mail: duaxkp@uwec.edu, Phone: (W) 715-836-2262 or (H) 715-835-0905.

NOW ENJOY READING EXCERPTS FROM THESE REPORTS OF SNATS CHAPTERS!

****NEW CHAPTER: UNIVERSITY OF MINNESOTA****

Chapter Advisor: Dr. Clifton Ware; President: Anna Hershey

The first program on October 23 was given by Dr. Deirdre Michael, speech pathologist discussing vocal health. In November Professor Glenda Maurice presented a master class. The chapter will have a pedagogy series throughout the year featuring the voice faculty at the U of M. Welcome to SNATS, Minnesota!

INDIANA UNIVERSITY

Chapter Advisor: Dr. Paul Kiesgen; President: Sarah Daughtrey

Once each month the Indiana SNATS chapter meets with faculty guest speakers including Paul Kiesgen speaking about publishing articles, Patricia Stiles on the teaching of Oren Brown and former NATS President Dale Moore with the topic "...After 50 Years of Doing This." The chapter also sponsored a program called "Mocksterclass" where two doctoral students taught master classes which were critiqued by faculty. This activity gave opportunities for supervised teaching and faculty input. Halloween was highlighted with a concert called "All Faced Up" to show they are according to Sarah not people who just talk about cricothyroids all the time! On the concert the singers performed repertoire outside their fach, gender, and instrument. This promises to be an annual event. Fun!

Kathryn Proctor Duax

VP, Discretionary Funds & Field Activities

LAGRANGE COLLEGE

Chapter Advisor: Dr. Patricia Callaway;

President: Katie Roberts

LaGrange SNATS participated in the Georgia Chapter Fall Workshop master classes with Dr. Karen Peeler. Funding for their participation in the workshop came from the chapter's fund raising efforts, primarily Christmas caroling last year. The chapter has service projects like ushering for the LaGrange Symphony Orchestra and planning a fun concert for the Boys and Girls Club. The chapter meets once each month for dinner and is enjoying reading articles from the Journal of Singing. They are drawing other music students into their group to help with projects.

NEBRASKA WESLEYAN UNIVERSITY

Chapter Advisor: Dr. Jana Holzmeier

President: Patricia Frampton

This semester the chapter explored the difficulties and strategies of teaching a specific non-classical style. Jazz was their topic, taught by Vice-president Carrie Kouma who led a studio class on healthy approaches to teaching the jazz vocal style. The chapter has planned a Winter Recital in December.

UNIVERSITY OF MICHIGAN

Chapter Advisor: Art Joslin

In November Michigan SNATS hosted Metropolitan Opera Tenor Richard Fracker for a master class. On January 14 the chapter will host "NATS Vocal Arts Day" with coaching and seminars for middle school and high school students; the students will receive critiques on their solo singing, receive coaching and will attend mini-workshops on topics such as concert etiquette, audition skills and techniques. The students will also attend a master class presented by one of the voice faculty. On January 18 at the University of Michigan Voice Clinic, the chapter will host Dr. Norman Hogikyan for a vocology lecture in the evening. If you are interested in these events, contact Art Joslin at acj@umich.

UNIVERSITY OF WISCONSIN-WHITEWATER

Chapter Advisor: Dr. Brian Leeper

President: Becca Osmon

This busy chapter of 18 members is doing several fundraisers including "create a cookie" sale, a pancake feed, and hand-knitting scarves! They have invited several faculty to present programs. Dr. Brian Knutson spoke about choral graduate school programs and Dr. Harry Johanson will speak about "Vocal Solos in Major Choral Works" next semester. The chapter hosted Johann Lippens from the Netherlands for a recital of Schubert's Winterreise. They also helped with a campus recital presented by Brian Leeper, Sangeetha Rayapati and Jessica Paul singing Wolf's Spanishches Liederbuch. The chapter will also present their own recital in March.



2005-2006 ROSTER OF DISTRICT OFFICERS

CAL-WESTERN REGION

Governor, Arizona-Robert Barefield, 602-470-9967, Robert.Barefield@asu.edu
President, So. Arizona Chapter-Monte Ralstin, 212-531-1027, mralstin@email.arizona.edu, mrbt01@attg.net
President, Central-Northern Arizona Chapter- Karen Hendricks Crawford, 623-935-5594, klh718@aol.com , president@natscnaz.org
Governor, Northern CA- Kathleen Ludowise, 408-257-0443, KathyLudowise@yahoo.com
President, San Francisco Chapter- Sharon Kaye, 408-749-7607, sharonmezzo@comcast.net
President, San Joaquin Chapter- Joseph Wiggett, 405-744-8986, JWigger@cstan.edu
President, Redwood Empire Chapter- Mary Beard, 707-546-8782, Mehbeard@earthlink.net
President, Sierra North Chapter- Daun Hayes, 530-893-4846, daunhayes@netzero.net
Governor, Southern CA- Margaret Dehning, 310-521-9859, wdehning@cox.net
President, Los Angeles Chapter- Janet Smith, janetsmith@fullerton.edu
President, San Diego Chapter- Scott Whitaker, 619-461-4763, Whytacre@sonic.net
Governor, Hawaii- Vicki Gorman, 808-239-5907, gorman.hawaii@verizon.net
President, Honolulu (Hawaii) Chapter- Marilyn Kim, 808-680-9544, mkimstudio@aol.com
Governor, Nevada- Alfonse Anderson, otelloal@aol.com
President, Las Vegas Chapter- Carol Ann Modesitt, 435-865-1812, CarolAnnMod@aol.com
President, Reno Chapter- Jennifer Tibben-Lembke, tiblen@unr.edu
Governor, Utah-Karen Brookens, 801-399-3764, 801-626-6439 (W), kbrookens@weber.edu
President, Northern Utah Chapter- David Schmidt, 435-649-4114, 801-699-6250 (cell)
President, Southern Utah Chapter- Janilyn Anderson, 801-785-2275, jpsong@xmission.com

CENTRAL REGION

Governor, Illinois
Charlotte Megginson, 309-298-1501 (W), 309-837-4254 (H), c-megginson@wiu.edu
President, Central Illinois Chapter-Jan Wanack, 309-682-6337 (H), 309-467-6399 (W)
President, Chicago Chapter-Aaron Johnson, 708-267-7395, president@chicagonats.org
Governor, Iowa-Margie Marrs, 319-362-9494, 319-399-8521, mmarrs@coe.edu
President, Iowa Chapter-Anne Petrie, petriea@central.edu
President, Lewis and Clark Chapter-Pam De Haan, 712-722-6206, pdehaan@dordt.edu
Governor, Missouri-Mary Jane Wilder, 913-971-3643, mwilder@mnu.edu
President, Kansas City Chapter-Rebecca Sherburn, sherburnre@umkc.edu
President, Ozark Chapter-Richard Honea, 417-889-1643, Honear@evangel.edu
President, St. Louis Chapter-Pat Lacey, 614-392-2101, laceypat@mobap.edu

EASTERN REGION

Governor, Delaware, Jaclyn Heller, 302-559-1824, jheller@udel.edu
Governor, New Jersey- Stephen Oosting, 973-746-8575, oostings@mail.montclair.edu OR stephoo@aol.com
President, New Jersey Chapter- Elem Eley, 609-637-9036 (H), 609-921-7100 x8252 (W), kavbar@comcast.net
Governor, New York-Richard McCullough, 315-492-1648 (H), 315-469-2206 (W), rmccullor@aurora.sunyocc.edu
President, Finger Lakes Chapter-Randie Blooding, 607-277-5629 (H), 607-274-3651 (W), blooding@ithaca.edu
President, NY City Chapter-Jan Prokop, 212-924-5213, JProkop@aol.com
President, Eastern New York Chapter-Susan Harwood, HrwdSusan@aol.com
Governor, Pennsylvania- Richard Kennedy, 814-234-2215, rrk3@psu.edu
President, Tri-State Chapter- Stephen Totter, 412-682-6868, totter@andrew.cmu.edu
President, Delaware Valley Chapter-Patricia Hoy Conrad, 610-269-7760, tcon@bee.net
President, Allegheny Mountain Chapter- Jean Bradel, 717-872-9342
Governor, Quebec- Denis Boudreault, 514-389-4833, boudred@videotron.ca
President, Chapitre Montreal- Denis Boudreault, 514-389-4833, boudred@videotron.ca
President, National Capital Region Chapter- Susan Blyth-Schofield, 613-266-4950 (H/W), 613-295-8723 (Cell), sblythschofield@hotmail.com
Governor, West Virginia-Janis-Rozena Peri, 304-284-9812 (H), 304-293-4617 X3184 (W), jperi2@yahoo.com

GREAT LAKES REGION

Governor, Indiana-Caroline B. Smith, 812-333-2528 (H), 765-658-4386 (W), cbsmith@depauw.edu
President, Indiana Chapter-Mary Katherine Kelton, 317-257-5825, kkelton@butler.edu
Governor, Michigan-Robert Doyle, 734-331-4275, rdoyle@albion.edu
President, Michigan Chapter-Robert Doyle, 734-331-4275, rdoyle@albion.edu
Governor, Ohio-Erik Johanson, 419-475-2481, 419-530-4551, ejohans@utnet.utoledo.edu OR ejohans@earthlink.net
President, Buckeye Chapter-Karen Eckenroth, keckenroth@otterbein.edu
Governor, Ontario- Lynn Blaser, 416-441-3146, l.blaser@utoronto.ca
President, Ontario Chapter- Lynn Blaser, 416-441-3146, l.blaser@utoronto.ca

INTERMOUNTAIN REGION

Prov. Governor, Alberta-Viola Walbank, 780-430-6743, vwclassics@shaw.ca
President, North Central Alberta Chapter-Melanie Cherniwan, 780-639-2787, smartsoprano@hotmail.com
President, Calgary Chapter-Rachel Hop, 403-242-4916, rhop@telusplanet.net
Governor, Idaho-Lynn Berg, 208-345-1594, 208-385-3787, lberg@boisestate.edu
President, Treasure Valley Chapter-Mari Jo Tynon, 208-459-3361, 208-459-5249, mjtynon@albertson.edu
Governor, Eastern WA-Northern Idaho-Andrea Dawson, 509-979-4656, andreasdawson@hotmail.com
President, Inland Empire Chapter-Sheila Converse, 509-332-5764, converse@mail.wsu.edu

2005-2006 ROSTER OF DISTRICT OFFICERS

Governor, Montana-Anne Basinski, 406-721-7983,
basinskia@mso.unt.edu
President, Montana Chapter-Jon Harney, 406-585-3717,
jharney@montana.edu
President, Central-East Chapter-Anne Basinski, 406-721-7983,
basinskia@mso.unt.edu
President, Big Sky Chapter-Mary Moore, 406-453-5801,
memsing@sofast.net

MID-ATLANTIC REGION

Governor, Maryland/District of Columbia-Catherine Anderson,
301-949-5572, c.anderson48@verizon.net
President, Maryland Chapter-Deborah Thurlow, 202-387-7401 X12,
deb@musicalsource.com
Governor, North Carolina-Priscilla Peebles Porterfield,
828-963-8344 (H), 828-262-6451 (W), porterfieldp@appstate.edu
President, North Carolina Chapter-John Blizzard, 704-233-8306 (W),
704-893-2865 (H), blizzard@wingate.edu
Governor, South Carolina-James Beaumier, 843-857-3778 (W),
843-383-4389 (H), JJBeaumier@aol.com
President, South Carolina Chapter-Sharon J. Mapes,
843-622-3051 (H), diva@sc.rr.com
Governor, Virginia-John Hugo, 434-525-3689 (H), 434-582-2359 (W),
johnwillhugo@juno.com
President, Virginia Chapter-Karen Ann Hoy, 757-440-5612 (H),
757-343-1672 (Cell), cantihoy@verizon.net

MID-SOUTH REGION

Governor, Kentucky-Sonya Baker, 270-762-6446,
sonya.baker@murraystate.edu
Governor, Tennessee-Marjorie Bennett Stephens, 865-670-9494,
msteph10@utts.edu
President, Memphis Chapter-Carole Choate Blankenship,
901-274-2195 (H), 901-843-3775 (W), blankenship@rhodes.edu

NEW ENGLAND REGION

Governor, Canadian Atlantic Provinces-Helen Pridmore,
506-364-2381, hpridmore@mta.ca
Governor, Connecticut-Margaret Astrup, 203-281-7744,
AstrupM@wesu.edu
President, Connecticut Chapter-Jana Piváček-Cole, 860-653-9294,
janalala@aol.com
Governor, Maine-David Goulet, 207-885-9534,
pgoulet1@maine.rr.com
President, Maine Chapter-Bruce Fithian, 207-839-8178,
fithian@usm.maine.edu
Governor, Massachusetts-William Cotten, 617-734-6723,
dawgphan@aol.com
President, Boston Chapter-Thomas Enman, 617-773-9767,
nevyanman@aol.com
President, Western Massachusetts Chapter-Mary Brown Bonacci,
413-572-9714, mbrown@wsc.ma.edu
Governor, New Hampshire- Peggy Horstmann Hodes,
603-225-1036, vibrantvoice1@aol.com
President, New Hampshire Chapter-Vacant
Governor, Rhode Island-Donald St. Jean, 401-822-1732,
stjeand@salve.edu
President, Rhode Island Chapter-Florence St. Jean, 401-822-1732,
fmstjean@cox.net
Governor, Vermont-Jill Hallett Levis, 802-863-2616

NORTH CENTRAL REGION

Governor, Manitoba-Saskatchewan-Marge Koop, 204-783-2933,
nmkoop@mb.sympatico.ca
President, Manitoba-Saskatchewan Chapter-Marilyn Szajcz,
204-256-6367, mszajcz@mts.net
Governor, Minnesota-Janet Ahern, 320-589-6240 (W),
320-589-2474 (H), ahernj@mrs.umn.edu
President, Minnesota Chapter-Shari Speer, 651-690-0850,
thelyric1@aol.com
Governor, North Dakota-Anne Christopherson, 701-777-2835 (W),
701-792-2969 (H), anne_christopherson@und.nodak.edu
President, North Dakota Chapter-Royce Blackburn, 701-777-2837(W),
701-775-0108 (H), royce_blackburn@und.nodak.edu
Governor, South Dakota-Christopher Mitchell, 605-624-0218 (H),
605-677-5718 (W), cmitchel@usd.edu
Governor, Wisconsin-Patricia Weis, 920-757-8816, pjiuweis@aol.com
President, Wisconsin Chapter-Kathy Otterson, 608-274-8528,
kotterson@edgewood.edu

NORTHWESTERN REGION

Governor, Alaska-Dennis Goff, 907-243-7464,
Alaskansinger@yahoo.com
President, Alaska Chapter-Kate Egan, 907-277-0085,
EGANQUIMBY@aol.com
Governor, British Columbia-Lorraine Reinhardt, 604-294-5548,
lorrainereinhardt@shaw.ca
President, Vancouver (previously BC Mainland) Chapter-Craig Tompkins,
604-421-6855, craigtompkins@shaw.ca
President, Victoria Chapter-Judith Dowling, 250-721-3512
Governor, Western Oregon-Scott Tuomi, 503-292-8401,
tuomis1@pacificu.edu
President, Cascade Chapter-Valerie McIntosh, 503-585-4298,
vmcintos@willamette.edu
Governor, Western Washington-Nancy Rustad, 425-744-4575,
nprsop@hotmail.com
President, Puget Sound Chapter-Nancy Bos Costlow, 425-653-5586,
ncostlow@blarg.net
President, Tahoma Chapter-Linda Ellingson, 253-927-2490,
dumasbay@earthlink.net

SOUTHEASTERN REGION

Governor, Alabama-Melanie Williams, 205-665-6665,
williamsm@montevallo.edu
President, Alabama-Jacqueline Leary-Warsaw, 205-226-4961,
jwarsaw@bsc.edu
Governor, Florida-Carole Clifford, 904-264-0711, ccopc@aol.com
President, Central Florida Chapter-Alan Gerber, 407-380-1383,
gerberalan@hotmail.com
President, N.E. Florida Chapter-Peggy Ezell, 904-388-7186,
pezell@ju.edu
President, S. Florida Chapter-Oscar Diaz, 305-757-7725,
pmimusic@bellsouth.net
President, Tampa Bay Chapter-Yvonne Dechance,
813-253-3333x3690(W), 813-258-6124(H),
aleatory@scaredofthat.com
President, Intracoastal Chapter-Dorothy Yanes, 561-965-7076,
yanesd@hotmail.com
Governor, Georgia-Linda Bannister, 706-667-4876, lbanniste@aug.edu
President, Georgia Chapter-William Dwight Coleman, 404-651-3676,
wcoleman@gsu.edu

New Voice Educators Symposium

In only their second year of existence, the Indiana University Chapter of Student NATS continues to create excitement in their chapter and region. On January 27th and 28th they will hold the second annual New Voice Educators Symposium on the campus of Indiana University at the newly endowed Jacobs School of Music. The Symposium provides the opportunity for new voice educators (current students or graduates with less than five years of teaching experience) to present scholarly papers, performances, or workshops in vocal pedagogy and related fields in a professional setting with a national audience.

At the advisement of Faculty Advisor Paul Kiesgen, IU Professor of Voice and Chair of the NATSAA Competition, the Chapter's founding officers, Sarah Daughtrey and Heather Winter, created the first Symposium to encourage voice teachers and students to engage in the presentation of scholarly research early in their careers. This would serve to contribute to a growing body of information, promote discussion of issues related to the teaching of voice, and would prepare the participants for a lifetime of similar professional activities.

With featured presenters from across the region, the 2006 IU New Voice Educators Symposium is free and open to the public. A live webcast of the two-day event can be accessed at www.indiana.edu/~iusnats.

Registration information is available on the website or by contacting the Symposium Chair, Brian Manternach, at bmantern@indiana.edu.



2006 Symposium Chair, Brian Manternach and IU Voice Professor Dr. Brian Horne discuss the day's events.



2005 Symposium Chair, Heather Winter opens the conference.

Connecticut NATS Workshop

The CT NATS Chapter had a very well received performance workshop on Nov. 13th led by Connie Chase and Richard Weidlich. Both teachers have studied with legendary masters who have provoked many colorful alternatives from their singers and actors, alike. A delightful 12 year old boy who sang "Where is Love" started the program, and also did a monologue from Oliver Twist. We watched as this young singer opened his mind to the values of pacing the text to the sensing of musty, damp floors and walls, while deepening the original intentions of his song. It was magical watching the transformation in this young man.

Four singers from four different voice studios presented a 3-minute Broadway song, and a 2-minute monologue. Both teachers observed as the singers, ages 12-25, presented their gifts.

Connie specializes and custom-works singers by discovering the images and imagined circumstances that best suit that singer's nature.

Each singer was very clearly making different choices after her probing questions. One young woman found herself sensing a periwinkle rough-surfaced wall with an impenetrable character as she sang "Show Me" from My Fair Lady.

Richard Weidlich handled the monologues. He had a gentle way of digging into the psyche of each actor with questions that would bring the character back to the "I" place, rather than third person. (i.e. If I were terrified vs. if my character were terrified). Each actor became much more real when they were not imagining "playing a character", but instead taping their own sensitivities and choices. Richard explored extremes from Oliver Twist and Lady Anne from Richard III to contemporary monologues about buying tuna and freaking out. We found each performer more polished and confident by the end of the 3-hour workshop. We also got to know each other better. We have a great deal of talent in our little chapter, and we have every intention of searching it out for future sharings of this type.

Jana Piváček-Cole

Pres. CT NATS Chapter

Workshop in Georgia

The Georgia chapter of NATS held its annual Fall Masterclass on the campus of West Georgia College and State University in Carrollton, Georgia, on November 4-5, 2005. Karen Peeler of Ohio State University was the clinician for these classes.

Linda Bannister

Gov., Georgia NATS

REGIONAL NOTES

Fall Symposium a Success

Chapman University was the setting the Los Angeles Chapter Fall Symposium. Cynthia Munzer presented a morning session entitled "Shoot for the Moon; Finding the Artist Within You" and Dr. Sharon Radionoff of the Sound Singing Institute presented a detailed discussion on vocal health issues, vocal balance and addressing specific vocal problems in a master class during the afternoon.

Cynthia Munzer helped five young women who sang in her master class and helped them find the beginnings of their own unique artistry. For one, the lesson was about owning the space of the stage and finding real joy and charm in her delivery. For another, it was about learning to follow her dramatic instincts fully and without apology. Still another learned the value of the "Hollywood Layback" in opening the body so the voice can reach its fullest point and the audience can glimpse the soul of the singer and be drawn into the performance. Ms. Munzer asked those attending to consider the following questions: "What is easy for you? What is your specific talent? What colors do you have to sing with? How big is your imagination? To what level are you able to be honest and authentic in a performance?"

Dr. Sharon Radionoff, Director of the Sound Singing Institute in Houston, Texas, is a Singing Voice Specialist in the field of Arts Medicine. Her presentation was divided into three parts.

She presented a "show and tell" video clip explanation of how the voice works, then had a master class with three students dealing with unique vocal problems. She concluded with a question and answer period.

Dr. Radionoff emphasized the need to find balance in singing first and always. She advised instructors not to "teach by command" but rather to be certain the student understands what is being asked of them. Other significant issues she discussed included how pitch and resonance differ, tension and how it becomes additive, airflow, and the importance of knowing what body parts are involved in doing the work of singing, and how they work, both separately and together. She asked all singers and teachers to consider what is "natural" versus what is "habitual," and encouraged all to follow the 95%-5% Rule: All singing should be 95% flawless technique and 5% stylistic tools that are a choice.

Victoria Lavan

NATS Members offer Hurricane Katrina Assistance

The executive office has been notified that Tulane University lost their entire music library during the hurricanes. Members who wish to donate music literature, audio-visual materials, texts, and periodicals may do so by contacting:

Barbara Jazwinski, Chair
Music Department, Dixon Hall
Tulane University
New Orleans, LA 70110

Louis T. Nicholas dies at 95

Louis Nicholas, charter member and past president of NATS, passed away in Memphis on December 28, 2005 at the age of 95. He was buried in Nashville on Saturday, January 7, 2006 at Woodlawn Memorial Park. Please go to www.Tennessean.com and then "obituaries" to see an article by the current music critic of the "Tennessean," and look for an obituary in the Mar/April JOURNAL OF SINGING.

In memorium

HELEN ALLEN
SUSAN M. BAILEY
ROBERT BERNARD
ELDON BLACK
NORMA FALCON
BILLIE JEAN GREATHOUSE
CRESTON KLINGMAN
PAUL MATTHEN
LOUIS NICHOLAS
LOUISE PISARCZYK
STELLA RANKIN
EVELYN TROXLER
HARRY WAYNE
BETTY WOODS

Portland, OR USA
Lowell, MA USA
Santa Cruz, CA USA
San Angelo, TX USA
Calgary, Alberta Canada
Honolulu, HI USA
Waco, TX USA
Bloomington, IN USA
Memphis, TN USA
Walsenburg, CO USA
Vadnais Heights, MN USA
San Antonio, TX USA
San Marcos, TX USA
Ada, OK USA

(Please be advised that all notices of deceased members should be sent directly to the NATS executive office in writing.)

REGIONAL CALENDAR

**Schedule is subject to change. Please confirm listings with the contact person listed.
For updated information, check the Regional Calendar at www.nats.org.**

CALIFORNIA WESTERN

REGION—*Arizona, California, Hawaii, Nevada, Utah.*

Cal-Western Regional Governor: Eric Howe, 8898 Skyline Blvd., Oakland, CA 94611-1638, (510) 531-3139, ERICVH@aol.com. For additional information and events, please visit the Los Angeles Chapter Website, <http://nats.org/losangeles> & San Francisco Bay Area Chapter Website, <http://nats.org/sfbayarea>.

CENTRAL REGION

—*Illinois, Iowa, Missouri.*
Central Regional Governor: Joella Todd, 5640 Waterfront Drive N, Columbia MO 65202-9056, (573) 886-8416, ToddJE@missouri.edu.

For additional information and events, please visit the Chicago Chapter Website, <http://nats.org/Chicago>.

February 2006

4, Elmhurst College, Chicago IL, presentation on vocology by Aaron Johnson Chicago Chapter, joint Meeting with the Chicago Singing Teacher's Guild, contact Aaron Johnson at president@chicagonats.org.

25, William Jewel College, Liberty, MO, Spring Student Auditions, Kansas City Metro Chapter, contact Rebecca Sherburn, SherburnRe@umkc.edu.

26, University of Missouri-St. Louis, St. Louis, MO, Spring Student Auditions, St. Louis Chapter, contact Patricia Lacey, LACEYPAT@mobap.edu.

April 2006

1, 10:00 am until 3:00 pm, Augustana College, Rock Island, IL, "Celebration of Song: A Workshop for Singers," Central Illinois NATS (CILNATS), Guest Clinicians: CILNATS specialists, contact Sangeetha Rayapati, murayapati@augustana.edu, phone (309) 794-7238.

2, Briar Cliff University, Sioux City, IA, Student Auditions, Lewis and Clark Chapter, contact Pam De Haan, pdehaan@dordt.edu.

8, Moody Bible Institute, Chicago, IL, Student Auditions, Chicago Chapter, contact auditions@chicagonats.org.

EASTERN REGION

—*Delaware, New Jersey, New York, Pennsylvania, Quebec (includes Ottawa area), West Virginia.* Eastern Regional Governor: Margaret Cusack, 449 N. Mt. Vernon Circle, Bensalem, PA 19020-8207, (609) 921-7100 (W), (215) 245-7575 (H), MCusack@rider.edu.

For additional information and events, please visit the Montréal Chapter Website, <http://nats.org/Montreal> & the New Jersey Chapter Website, <http://nats.org/newjersey>

January 2006

8, 3 p.m., Music Building at Moravian College, Main and Church St. in Bethlehem, PA, Lehigh Valley Chapter organizational meeting and officer election, contact Eduardo Azzati, azzati@moravian.edu.

February 2006

4, Caldwell College, 9 Ryerson St., Caldwell, NJ, New Jersey Chapter Doris Lenz Festival and High School Auditions.

11, 9 a.m.—5 p.m., Amy DuPont Music Building at University of Delaware Department of Music, Delaware Chapter Student Auditions and Chapter Meeting, contact Jaclyn Heller, jheller@udel.edu.

11-12, 10 a.m.—6 p.m., Department of Music, Concordia University, Loyola Campus, 7141 Sherbrooke St., West, Montreal, International Chapitre Montreal 2006 Student Vocal Festival, contact Denis Boudreault, festival@nats-montreal.ca.

13, 7—10 p.m., Lang Hall, Hunter College 695 Park Avenue, NYC, Master Class with John Fisher of the Metropolitan Opera, contact Jane Bunnell, jbunnell@aol.com.

24-26, Perez Bldg. and Taberet Hall, University of Ottawa, National Capitol Region Chapter 14th Annual Student Vocal Festival, contact Yoriko Tanno-Kimmons, ytk.studio@verizon.net.

March 2006

4, 6 p.m., Clara Lichtenstein Recital Hall (Rm. C209, Faculty of Music, McGill University), Montreal, 2006 NATSAA Quebec District Auditions, contact Denis Boudreault, phone 514-389-4833.

9-11, College of Creative Arts at West Virginia University, Eastern Region Conference and Student Auditions, guest artist—Pamela Hinchman recital of works with Shakespeare texts with John Douglas, music director, contact Robert Thieme at Robert.Thieme@mail.wvu.edu.

26, 2:30—5:30 p.m., Martin Dining Room, Westminster Choir College of Rider University, 101 Walnut Lane, Princeton, NJ, New Jersey Chapter, "Learning Styles in the Voice Studio with Dr. Frank Abrahams, contact Elem Eley, eley@rider.edu.

GREAT LAKES REGION

—*Indiana, Michigan, Ohio, Ontario (excludes Ottawa area)*
Great Lakes Regional Governor: Maureen Balke, 409 East North Street, St., Albion, MI 49224-1106, (517) 629-4713 (H), (517) 629-0471 (W), mbalke@albion.edu.

For additional information and events, please visit the Ontario Chapter, <http://nats.org/ontario>.

March 2006

11, Grand Valley State University, Michigan, Great Lakes Regional Student Auditions, contact Maureen Balke.

INTERMOUNTAIN REGION

—*Alberta, Idaho, Montana, eastern Oregon, eastern Washington.* Intermountain Regional Governor: Elaine Chase, 836 Cannell Rd., SW, Calgary AB T2W 1T4, Canada, (403) 281-1361, arcasc@telus.net.

January, 2006

28, 10:00 - 3:00 pm, Mount Royal College, Calgary, Alberta, Calgary Chapter, the Spanish Art Song - one day workshop, contact Rachel Hop rhop@telus.net

March 2006

3-4, Bozeman, Montana, student auditions, contact Anne Basinski, basinskiA@mso.umt.edu
25, 1:00 pm., Boise State University, contact Lynn Berg, lberg@boisestate.edu, Regional NATSAA Finals.

MID-ATLANTIC REGION

—*Maryland, North Carolina, South Carolina, Virginia, Washington, D.C.* Mid-Atlantic Regional Governor: John Blizzard, Box 3072, Wingate University, Wingate, NC 28174, 704-233-8306 (W), 704-392-3668 (H), blizzard@wingate.edu.

February 2006

UC Greensboro, North Carolina District: Student Auditions, contact auditions chair Barbara Peters at bapeters@mindspring.com.

April 2006

6, NATSAA: contact Regional Governor Dr. John Blizzard at blizzard@wingate.edu.
7-8, Mid-Atlantic Regional Conference and Student Auditions, Guest Clinician: Robert Edwin—Musical Theatre Pedagogy,

March 2006

3-4, Shenandoah University, Winchester, VA, Virginia District Spring Conference and Adjudications, contact Sandra McClain, VP/ Auditions Coordinator
s_mcclain@adelphia.net.

4, USC-Columbia, South Carolina District: Student Auditions, contact SC-NATS Governor James Beaumier,
jamesb3@darlington.k12.sc.us.
4, University of Maryland, Clarice Smith Center for the Performing Arts, Maryland/ D.C. District: Student Auditions, applications due February 4, 2006 to VP/Auditions Chair Maryann Sewell at viva.diva@earthlink.net (202)-726-8858.

MID-SOUTH REGION—Kentucky,

Tennessee. Mid-South Regional Governor: Roma Prindle, Morehead State University, 204 Baird Music Hall, Morehead, KY 40351, (606) 783-2481, rprindle@moreheadstate.edu.

March 2006

24, 3 p.m., (Site Change from Bellarmine College) University of Louisville, Comstock Hall, Kentucky NATSAA, contact Dr. Sonya Baker, 270-762-6446.

31, Carson Newman College, Mid-South NATSAA, contact Dr. Roma Prindle, 606-783-2481, rprindle@moreheadstate.edu.

31-April 1, Carson Newman College, Jefferson City, TN, Mid-South NATS Conference, contact Ann Jones 423-475-3166.

NEW ENGLAND REGION—

Connecticut, Maine, Massachusetts, New Brunswick, Newfoundland, New Hampshire, Nova Scotia, Prince Edward Island, Rhode Island, Vermont. New England Regional Governor: Carl Swanson, 40 Mayflower Ridge Drive, Wareham, MA 02571, (508) 295-2720, nenats@aol.com.

For additional information and events, please visit the New England Region NATS Website, <http://www.nats.org/newengland>.

February 2006

4-5, 9 am - 5 pm, Boston University, School of Fine Arts, 855 Commonwealth Avenue, Boston, MA, Boston NATS, Musical Theatre Division Song Competition, contact Hallie Wetzell, hwetzell@aol.com.

18-19, 9 am - 5 pm, Boston University, School of Fine Arts, 855 Commonwealth Avenue, Boston, MA, Boston NATS, Song and Aria Division Song Competition, Ellie Edwards, eledw@aol.com.

March 2006

4, 9 a.m.- 5 p.m., RI College, Providence, RI, RI NATS, Song Festival, Flo. St. Jean, fmstjean@cox.net.

April 2006

8, 10 a.m. - 4 p.m. Westfield State College, 577 Western Ave, Bates Hall, Westfield, MA, Western Massachusetts NATS, Repertoire and Private Studio Workshop with Joan Frey Boytim, Mary Brown Bonacci, 413-572-8298

9, 1 p.m. - 4 p.m., RI College, Providence, RI, RI NATS, Spanish diction class and performance master class on Spanish song and zarzuela with Pablo Zinger, Flo St. Jean, fmstjean@cox.net.

NORTH CENTRAL REGION—

Manitoba, Minnesota, North Dakota, Saskatchewan, South Dakota, Wisconsin. North Central Regional Governor: Suzanne Draayer, Music Dept-PAC 142, Winona State University, Winona MN 55987-1209, (507) 454-0243 (H), (507) 457-5255 (W), sdraayer@winona.edu.

For additional information and events, please visit the North Central Region Website, <http://nats.org/minnesota>.

January 2006

22, 3—5 p.m., The Great Hall, Canadian Mennonite University, 500 Shaftsbury Blvd, Winnipeg, "Vocal Pedagogy: The First Lesson," contact Marge Koop at nmkoop@mts.net or 783-2933.

March 2006

25, 9:30 a.m.—12 p.m., Concordia University, 275 N. Syndicate Street, St. Paul, MN, Minnesota NATS spring workshop, "Creating Effective Gesture in Performance," Richard Crittenden, guest clinician, contact Monica Murray at murray@csp.edu.

31, 4 p.m., Bismarck, ND, North Dakota NATS Annual Chapter Meeting, contact Anne Christopherson, anne_christopherson@und.nodak.edu.

April 2006

1, 10 a.m., Wisconsin Lutheran College, Milwaukee, Wisconsin, WI NATS Spring Workshop, Thomas Cleveland, presenter, contact Carolyn Fons at carolyn.fons@wlc.edu, 414-443-8705.

1, 7a.m.—5 p.m., Bismarck State College, Bismarck, North Dakota, NDNATS Student Auditions, contact: Kenneth Williams at kenneth.williams@dsu.nodak.edu.

9, 3—5 p.m., Manitoba Conservatory of Music and Arts, 105-211 Bannatyne Ave., Winnipeg, "A Master Class with Russell Braun," contact Marge Koop, nmkoop@mts.net or 783-2933.

May, 2006

8, 9:30 a.m.—12:30 p.m., The Great Hall, Canadian Mennonite University, 500 Shaftsbury Blvd, Winnipeg, Annual General Meeting followed by a lecture/demonstration on new music, unusual singing styles and techniques, contact Marge Koop, nmkoop@mts.net or 783-2933.

NORTHWESTERN REGION—

Alaska, British Columbia, western Oregon, western Washington. Northwestern Regional Governor: Charles Peterson, 3815 NE 96th Street, Seattle, WA 98115-2543, (206) 523-9858, cpeterson-voice@msn.com. Please visit the North Central Region Website, <http://nats.org/northcentral> & Cascade Chapter Website, <http://nats.org/cascade>.

January, 2006

20 - 22, Friday evening through Sunday late afternoon, Seattle Pacific University, Crawford Rm. 211, Puget Sound Chapter Winter Workshop - Non-classical singing, Robert Edwin presenter, contact Natalie Lerch, 206-675-0269, divanotlhere@aol.com

21, TBA, Willamette University, Salem, OR., Cascade Chapter, "Advances in Laryngology for Singers", Dr. James Thomas, M.D., presenter, contact Linda Brice 503-574-2611, lindajbrice@yahoo.com.

28, 9 a.m.—5 p.m., Highline Community College, Des Moines, WA., Tahoma Chapter Adjudications. Contact Darcie Fulkerson, 253-630-2168, covingtonvoicestudio@hotmail.com

29, 2 p.m., Vancouver Community of Christ Church, 3333 Kaslo St., Vancouver, BC, Vancouver Chapter, "My Word", Lyric Diction Workshop: Italian with Alexandra Browning, French with Elizabeth Brodovitch, contact Craig Tompkins (604) 421-6855, craigtompkins@shaw.ca.

February 2006

12, TBA, Chester Park, Alaska Chapter annual fundraising Cabaret, contact Dennis Goff, 907-243-7464, alaskasinger@yahoo.com.

19, 2 p.m., Vancouver Community of Christ Church, 3333 Kaslo St., Vancouver, BC, Vancouver Chapter Student Recital, contact Lorraine Reinhardt (604) 294-5548, lorrainereinhardt@shaw.ca.

25, 10 a.m., Alaska Pacific University Grant Hall, High School Music Theater auditions, contact Kate Egan, 907-277-0135, eganquimby@aol.com.

28, TBA (time and location), Victoria Chapter Masterclass, "Call Me Mister: Defining the Trouser Role" with Kimberley Barber (subject to verification), contact Judy Dowling, (250) 721-3512 or jdowlingis@shaw.ca.

March 2006

24-25, Time TBA, Vancouver Community of Christ Church, 3333 Kaslo St., Vancouver, BC, Vancouver Chapter Songfest, contact Craig Tompkins (604) 421-6855, craigtompkins@shaw.ca.

24-25, Friday evening & all day Saturday, Puget Sound Chapter Adjudications, Shoreline Community College Music Building, contact Cherry Van Overstraeten, 425-488-1297, cherryvan@comcast.net.

REGIONAL CALENDAR

Schedule is subject to change. Please confirm listings with the contact person listed.
For updated information, check the Regional Calendar at www.nats.org.

SOUTHEASTERN REGION—

Alabama, Florida, Georgia, Puerto Rico, Virgin Islands.

Southeastern Regional Governor: Lloyd Mims, Palm Beach Atlantic University, 901 South Flagler, Box 24708, West Palm Beach FL 33416, (561) 803-2400, lloyd_mims@pba.edu.

February 2006

11, 9:45 a.m., Jacksonville University, Northeast Chapter Student Auditions, contact: Peggy Ezell, president or William Vessels (registrar), 904-256-7186 or 904-388-7186; pezell@ju.edu.

17-18, 10 a.m. Friday - 3:00 pm Saturday, Mercer University, Macon, Georgia State Student Auditions sponsored by the Georgia Chapter of NATS, contact: Martha Malone, 478-301-4015, malone_m@mercer.edu.

24-25, 1 p.m. Friday through Saturday afternoon, Huntingdon College, Montgomery, Alabama State Student Auditions sponsored by Alabama Chapter, NATS, contact: Dr. James Glass, Huntingdon College, 334-833-4474, JWGlass@Huntingdon.edu.

25, 3 p.m. and 4:45 p.m., Palm Beach Atlantic University, Spring Musicale sponsored by the Intracoastal Chapter, NATS, contact: Dot Yanes, 561 596-7076; yanesd@hotmail.com.

SOUTHERN REGION—*Arkansas, Louisiana, Mississippi.* Southern Regional Governor: Connie Day Roberts, 498 Tuscan Ave., MSC Box 14, Hattiesburg, MS 39401-5461, (601) 582-6180 (W), (601) 544-4316 (H), connie.Roberts@wmcarey.edu.

February 2006

23, Ouachita Baptist University, Arkansas NATSAA, contact Jon Secrest, secrestj@obu.edu, 870-245-5134.

24 - 25, Ouachita Baptist University in Arkadelphia, AR, Arkansas Chapter Conference, Guest Artist Timothy Shew — Music Theatre Recital and Masterclass, contact Glenda Secrest, secrestg@obu.edu, 870-245-5131.

April 2006

29, Monroe, LA, Southern Region Spring Board Meeting and NATSAA.

March 2006

4, Louisiana State University, Baton Rouge, South Louisiana Chapter Conference and NATSAA, contact Robert Grayson, rgrayson@lsu.edu, 225-578-2648, or Loraine Sims: lsims@lsu.edu, 225- 578-2641.

7 & 8, Delta State University, Cleveland, Mississippi, Mississippi Chapter Conference, contact Bradley Robinson, robinson@olemiss.edu, 662-915-1278.

7, Bologna Performing Arts Center, Delta State University, Cleveland, MS, Mississippi State NATSAA, contact Dana Rice, drice@mc.edu, 601-925-3448.

29, Monroe, LA, North Louisiana Chapter Conference and NATSAA Student Auditions
31, University of Louisiana at Monroe, North Louisiana Chapter Conference, Student Auditions, and NATSAA, contact Michael Rorex, rorexm@nsula.edu, 318-357-5803.

TEXOMA REGION—*New Mexico, Oklahoma, Texas.* Texoma Regional Governor: Paul Piersall, 5318 Knollwood, Abilene TX 79606-4312, (325) 692-8008, piersal@acu.edu. For Texoma information and events, please visit the Texoma Regional Website, <http://nats.org/texoma>; New Mexico NATS Website, <http://nats.org/newmexico>; South Texas NATS Website, <http://nats.org/southtexas>.

February 2006

4, Houston, Texas, Greater Houston Chapter, Workshop with Joseph Evans, contact: Christopher Michel, President, 936-294-1379, mus_ccm@shsu.edu.

March 2006

24-25, Ft. Worth, Texas, Southwestern Baptist Theological Seminary, Dallas/Ft. Worth Chapter Spring Student Auditions, contact Robert Best, President, DFW Chapter, 254-710-4602, Robert_Best@baylor.edu.

25, Houston, Texas, Greater Houston Chapter Workshop with Dr. Lee Thompson - Whitman College, contact Christopher Michel, President, Greater Houston Chapter, 936-294-1379, mus_ccm@shsu.edu.

April 2006

1-2, Ada, Oklahoma, Oklahoma District Spring Conference/Auditions, contact Kenneth Bohannon, Governor OK NATS, 405-574-1293, facbohannonk@usao.edu.

8, San Marcos, Texas, Texas State University, South Texas Chapter Spring Auditions/Conference, contact Diana Allan, 210-458-5329, diana.allan@utsa.edu.

WEST CENTRAL REGION—

Colorado, Kansas, Nebraska, Wyoming. West Central Regional Governor: Deborah Baxter, 360 N. Yale, Wichita, KS 67208-3242, (316) 683-1072 (H); (316) 978-3423 (W); (316) 978-3625 (Fax), deborah.baxter@wichita.edu. For additional information and events, please visit the Colorado and Wyoming Chapter Website, <http://nats.org/cowyo>.

Santa Fe Opera Needs NATS' Help

The Santa Fe Opera is planning an Apprentice Reunion and Gala Benefit for the Apprentice Program as part of the 50th Anniversary Season Celebration in August, 2006. We are trying to locate former Apprentices and would appreciate any help from NATS teachers/singers who might have been in Santa Fe as an Apprentice, or might know someone who was an Apprentice during the last 50 years.

Contact the Reunion Committee by emailing apprenticereunion@santafeopera.org. As of January 10, there will be a link on the Santa Fe Opera Website for downloadable registration, tickets, and information about available accommodations.

ASSOCIATION NOTES

2005-2006 ROSTER OF DISTRICT OFFICERS continued....

SOUTHERN REGION

Governor, Arkansas-Jon Secrest, 870-245-2483 (H), 870-245-5134 (W), secrestj@obu.edu

President, Arkansas Chapter-Glenda Secrest, 870-245-2483 (H), 870-245-5131 (W), secrestg@obu.edu

Governor, Louisiana-Lorraine Sims, 225-248-8427 (H), 225-578-2641 (W), lsims@lsu.edu

President, N. Louisiana Chapter-Michael Rorex, 318-356-9521 (H), 318-357-5803 (W), rorexm@nsula.edu

President, S. Louisiana Chapter-Robert Grayson, 225-769-5867 (H), 225-388-2648 (W), rgrayson@lsu.edu

Governor, Mississippi-Dana Rice, 601-925-5115 (H), 601-925-3448 (W), drice@mc.edu

President, Mississippi Chapter-Bradley Robinson, 662-281-8173 (H), 662-915-1278 (W), robinson@olemiss.edu

Governor, Rio Grande District-Jean Ornellas, 505-562-2561 (W), 505-749-0340 (H), jean.ornellas@enmu.edu

President, New Mexico Chapter-Phillip Christiansen, 505-644-3765, 505-646-1986 (W), philip@nmsu.edu

Governor, North Texas District-Joan Wall, 940-262-0155 (H), 940-898-2508 (W), jwall@mail.twu.edu or jcbwall@aol.com

President, Dallas/Ft. Worth Chapter-Robert Best, 254-857-9582 (H), 254-710-4602 (W), Robert_Best@baylor.edu

President, East Texas-Brenda Dearman, 903-935-1929 (H), 903-935-7963 X2160 (W), bdearman@etbu.edu

Governor, South Texas-Beverly Laubach, 281-370-9225 (H), 713-402-5122 (W), blaubach@st.ukes-hou.org

President, South Texas Chapter-Diana Allan, 210-767-1950 (H), 210-458-5329 (W), diana.allan@utsa.edu

President, Greater Houston Chapter-Christopher Michel, 936-294-1379 (W), 936-714-6390 (cell), mus_ccm@shsu.edu

TEXOMA REGION

Governor, Oklahoma District-Ken Bohannon, 405-222-5170 (H), 405-574-1293 (W), facbohannonk@usao.edu

Governor, West Texas District-Michael Scarbrough, 325-674-2143(W), 325-672-2104 (H), scarbroughm@acu.edu

President, Great Plains Chapter-Lynette Chambers, 325-795-2997, 325-670-1430 (W), dorabellal@aol.com or lchambers@hsutx.edu

President, Panhandle Chapter-Kathy McNeil, 806-797-1833, mcneil.kj@scglobal.net

WEST CENTRAL REGION

Governor, Colorado-Carol Ann Niles, 970-248-1791(studio), niles474@bresnan.net

Governor, Kansas-Reginald Pittman, 785-532-3826 (W), 785-776-3808 (H), pittman@ksu.edu

Governor, Nebraska-Alisa Belflower, abelflow@unlnotes.unl.edu

Governor, Wyoming-Carol Ann Niles, 970-248-1791(studio), niles474@bresnan.net

DON'T FORGET THESE IMPORTANT DEADLINES!

FEBRUARY 1, 2006-DEADLINE to submit a reservation for EXHIBITING & ADVERTISING FOR THE NATS 2006 MINNEAPOLIS CONFERENCE.

DEADLINE TO SUBMIT YOUR ADVERTISEMENT TO NATS IS MARCH 15, 2006.

ALL ADS must be submitted CAMERA READY, or in a digital file, Greyscale at 100% of ad size.

NATS MEMBER STATISTICAL REPORT

2002 2003 2004 2005

Total Active Members

1st Quarter	5214	5566	5534	5966
2nd Quarter	5507	5860	5901	6152
3rd Quarter	5657	5998	6134	6279
4th Quarter	5885	6130	6325	6425

Emeritus Members (included above)

1st Quarter	246	281	286	292
2nd Quarter	250	281	290	290
3rd Quarter	249	279	285	285
4th Quarter	258	281	286	289

Delinquents

1st Quarter	591	489	718	442
2nd Quarter	410	345	447	369
3rd Quarter	346	314	367	349
4th Quarter	225	290	319	326

2001 2002 2003 2004

New & Reinstated (cumulative)

1st Quarter	111	159	117	155
2nd Quarter	193	295	224	277
3rd Quarter	290	414	388	435
4th Quarter	558	583	500	585

Resignations (cumulative)

1st Quarter	23	20	23	19
2nd Quarter	28	26	27	27
3rd Quarter	30	26	28	30
4th Quarter	47	35	40	49

IN THE SPOTLIGHT

Make plans now to join us for our 49th NATS Conference at the




Hilton
Minneapolis

1001 Marquette Avenue South
Minneapolis, Minnesota 55403-2440

TEL: (612) 376-1000

FAX: (612) 397-4875

www.minneapolis.hilton.com

* Room rate is \$123 sgl/dbl occupancy. Call (888) 933-5363 or (800) HILTONS to make your hotel reservation. Be sure to reference the "NATS CONFERENCE" or the three letter group code: TOS to get our special rate.

The Hilton Minneapolis Hotel is located in the heart of downtown, connected by skyway to the Minneapolis Convention Center as well as many of the city's finest attractions. The Minnesota Orchestra is next door and The Guthrie Theatre, Walker Art Center, fabulous shopping and superb restaurants are just a short stroll away. The Hilton Minneapolis Hotel is an elegant Victorian brick building that rises 25 stories above the center of one of America's top cities. The hotel is known for its service quality and is a seven-time winner of Successful Meeting Magazine's prestigious "Pinnacle Award."

*The National Association of Teachers of Singing, Inc.
invites*

Exhibitors and Advertisers

to support the

49th National Conference in Minneapolis, Minnesota

June 30 through July 4, 2006

*Publishers Showcases and new sponsorship opportunities will be available,
so reserve your space early!*

Contact us now for more information and order a registration packet!

For more information contact:

Deborah Guess

NATS Executive Office

4745 Sutton Park Court, Suite 201

Jacksonville FL 32224

Phone: 904-992-9201

E-mail: violetdlg@aol.com



Jan Opalach



Håkan Hagegård



Katherine Verdolini



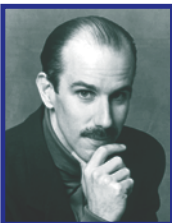
Ann Baltz



Sharon Mabry



Neil Semer



Craig Carnelia



Scott McCoy

DON'T MISS THIS EXCITING OPPORTUNITY

NATS 2006 MINNEAPOLIS CONFERENCE NORTHERN LIGHTS NEW DIRECTIONS IN SONG



MINNEAPOLIS, MINNESOTA
JUNE 30 – JULY 4, 2006

ARTIST RECITAL:

Jan Opalach

ACTION—REACTION:

STAGING ART SONG RECITALS

Håkan Hagegård

RELEASING LEARNING:

MYTHS AND TRUTHS IN SINGING TRAINING

Katherine Verdolini

TEACHING OUTSIDE THE BOX

Ann Baltz

CONTEMPORARY ART SONG:

WHAT DOES IT SOUND LIKE AND
HOW DO I DO IT?

Sharon Mabry

COMPARATIVE PEDAGOGY:

HOW DIFFERENT TEACHERS
APPROACH THE SAME STUDENT

Neil Semer & TBA

NORDIC ART SONG RECITAL

*Dan Dressen, Marla Fogderud,
Tracey Gorman and Peter Halverson*

PRE-CONFERENCE WORKSHOPS

JUNE 30, 9:00 A.M.-12:30 P.M.:

MUSIC THEATER PERFORMANCE TECHNIQUES

Craig Carnelia

VOICE SCIENCE PRIMER

Scott McCoy

EARLY REGISTRATION:

\$240

(Postmarked on or before April 1, 2006)

REGISTER ONLINE AT

www.nats.org

beginning January 1, 2006,

or call the NATS Office at 904-992-9101.

BREAKOUT SESSIONS

WOMEN SONG COMPOSERS

OF THE 20TH AND 21ST CENTURIES

D'Anna Fortunato

EXPANDING THE SCOPE AND INCOME

POTENTIAL OF THE PRIVATE VOICE STUDIO

Sharon Szymanski

TOP TEN VOCAL MYTHS DISPELLED

Deidre D. Michael

POWERING UP THE ART SONG RECITAL

Elizabeth Croy

WOMEN COMPOSERS ON BROADWAY:

THE LAST FIFTY YEARS

Linda Snyder & Sarah Mantel

"SONG TO THE DARK VIRGIN":

RACE AND GENDER IN THE ART SONGS OF FLORENCE B. PRICE

Bethany Jo Smith

CANCIONES DE ESPAÑA

Suzanne Draayer

VOCALOGY AND PRACTICING SINGING

John Nix

26 MUSIC THEATRE SONGS FOR CLASSICAL INSTRUCTORS

Corinne Ness

VOYAGE TO CANADA:

THE PRACTICAL APPLICATION OF CANADIAN SONG IN RECITAL

Caroline Schiller

TEACHING MEN TO SING:

RESONANCE STRATEGIES FOR THE MALE SINGER

Paul Kiesgen

AMERICAN SONG

Paul Sperry

WHAT HAS VOICE SCIENCE DONE FOR ME LATELY?

Ron Scherer

TEACHING ALTERNATIVE SINGING STYLES

Jeanette LoVetri

PANEL PRESENTATION

American Academy of Teachers of Singing

NATS INTERN PROGRAM—

YESTERDAY, TODAY, AND TOMORROW

Roy Delp

LYRICA SOCIETY PAPERS ON SCANDINAVIAN REPERTOIRE

Paul André Bempéchat

MONEY MATTERS

Michael Mullins

**Schedule is subject to change.*

Register now, for our 49th NATS Conference!



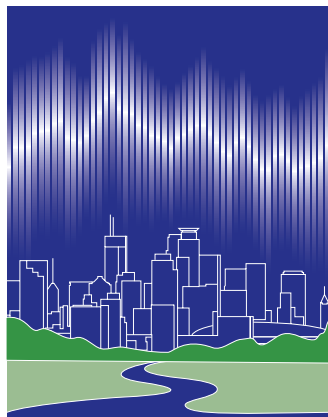
NATIONAL ASSOCIATION OF TEACHERS OF SINGING, INC.
4745 Sutton Park Court, Suite 201, Jacksonville FL 32224 • 904-992-9101

NATS Minneapolis Conference, June 30 – July 4, 2006

REGISTRATION FORM

N O R T H E R N L I G H T S

NEW DIRECTIONS IN SONG



49TH NATS CONFERENCE

MINNEAPOLIS, MINNESOTA

JUNE 30 – JULY 4, 2006

REFUND & CANCELLATION POLICY FOR CONFERENCE REGISTRATIONS:

Registration cancellations WILL NOT be accepted by phone. All cancellations MUST be in writing and sent to the NATS executive office, or faxed directly to 904-992-9326. Refund will be less an administration fee of \$25.00 USD on or before May 31, 2006. NO REFUND will be made after May 31, 2006, and refunds cannot be applied to subsequent conferences or other NATS events.

Name: _____ Phone: _____

Address: _____ City: _____

State/Province: _____ Postal Code: _____

Country: _____ E-mail address: _____

REGISTRATION FEES FOR THE CONFERENCE ARE AS FOLLOWS:

**Full registration includes admission to the Welcome Reception on Friday evening.*

Banquet ticket(s) and Pre-Conference Workshop Sessions must be purchased separately.

	POSTMARKED BEFORE APRIL 1	POSTMARKED AFTER APRIL 1	NUMBER ORDERED
NATS Member	\$240.00	\$265.00	_____
Non-NATS Member	\$275.00	\$300.00	_____
Non-Member Accompanying Guest	\$140.00	\$165.00	_____
Student (Current Student ID Required)	\$ 90.00	\$ 90.00	_____
Single Day Registration	\$ 40.00 (circle days)	FR,TU	_____
Single Day Registration	\$ 70.00 (circle days)	SA, SU, MN	_____
Single Day Student or Accompanying Guest	\$ 35.00 (circle days)	FR, SA, SU, MN, TU	_____

Single Day Registration does not include a ticket to artist recital or banquet.

BANQUET -

Tickets are sold separately and not included with full registration. \$60.00 _____

ARTIST RECITAL, JULY 1, 8 P.M. (Ticket is included with full registration.)

Adult \$35.00 _____

Student \$10.00 _____

Pre-Conference Workshop Session-with full registration
(June 30, 9 a.m.-12:30 p.m.) \$35.00 _____

Pre-Conference Workshop Session ONLY \$75.00 _____

Choose Only One:

☐ Music Theater Performance Techniques ☐ Voice Science Primer

PRE-CONFERENCE TWIN CITIES TOUR TICKET (June 30, 9 a.m.-12 p.m.) \$28.00 _____

EX-EXECS LUNCHEON (Open only to all past Board members) \$35.00 _____

TOTAL PAYMENT DUE \$ _____

CREDIT CARD INFORMATION

Cardholder _____

Card Number _____

Expires _____ Verification Code: _____ (on back of card)

Signature _____